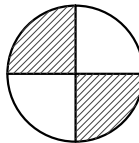



This document, together with the concepts and designs presented herein, is intended only for the specific purpose and client for which it was prepared. Reuse of and improper reliance on this document without written authorization and adoption by Green Earth Landscape Architecture shall be without liability to the same.


IRRIGATION SYMBOL LEGEND



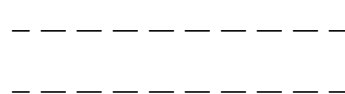
RAINBIRD PESB REMOTE
ELECTRONIC ZONE VALVE



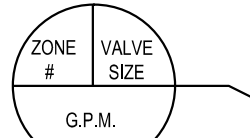
SCHEDULE 40 PVC 2-1/2"
IRRIGATION MAIN LINE



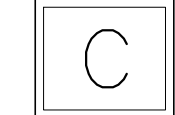
SCHEDULE 200 LATERAL
(CIRCUIT) PIPING



SCHEDULE 40 PVC SLEEVE PIPE
AT PAVEMENT CROSSINGS
(MINIMUM TWICE THE DIAMETER
OF LINES BEING SLEEVED) AND
DEPTH AS PER SFWMD
REQUIREMENTS



IRRIGATION ZONE INDICATOR

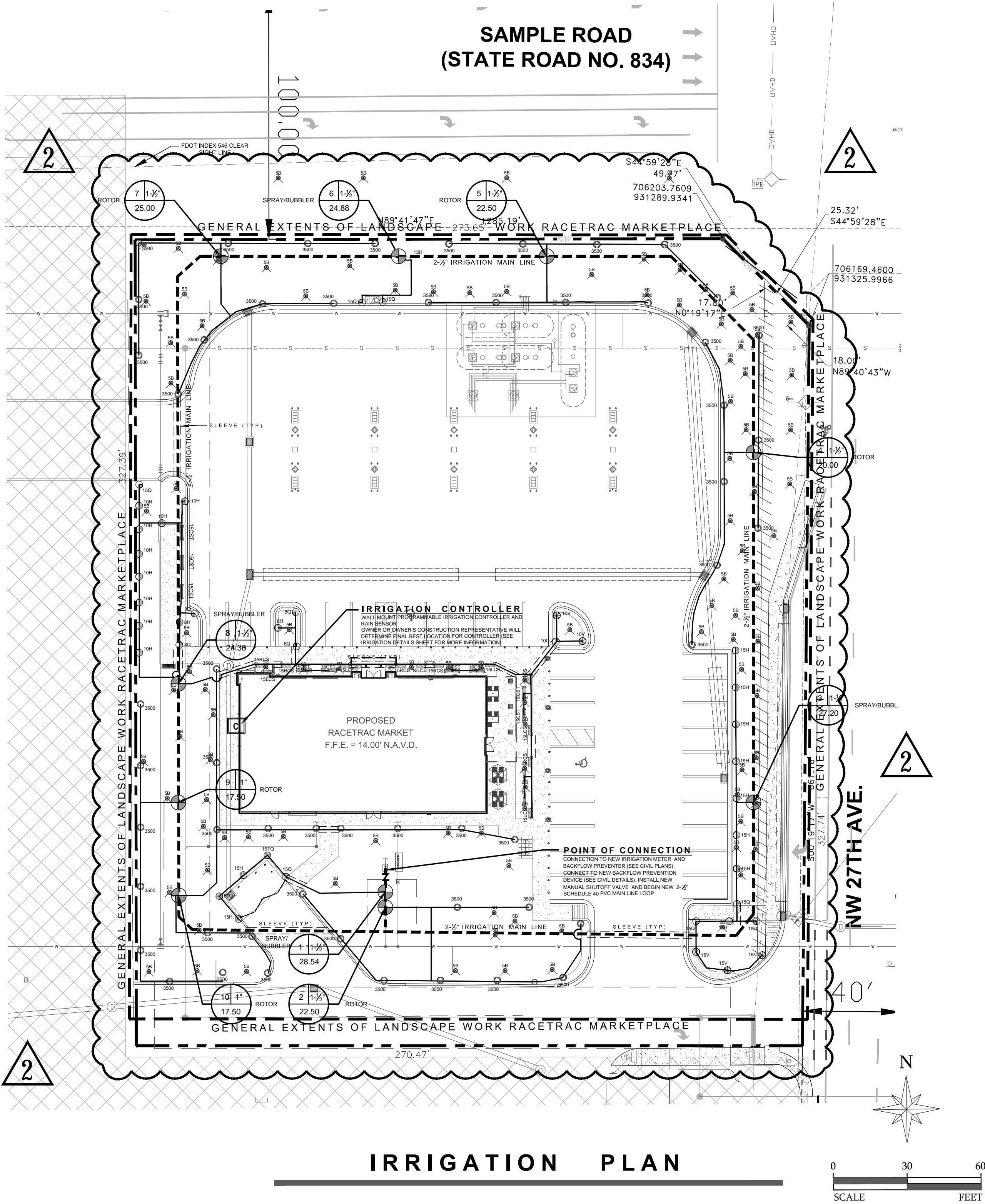


RAINBIRD ESP SERIES MODULAR
HYBRID CONTROLLER WITH
EXPANSION MODULES TO
12-STATION INSTALLED
USE RAINBIRD OUTDOOR WALL
MOUNT OPTION IN SECURABLE SS
WATERPROOF ENCLOSURE

NOTE: INSTALL BRASS MANUAL BALL MASTER
SHUTOFF VALVE BETWEEN BACKFLOW
PREVENTION DEVICE AND MAIN LINE

REFER TO SHEET L-301 FOR FOR IRRIGATION
DETAILS AND SHEET L-302 FOR IRRIGATION
SPECIFICATIONS.

IT IS REQUIRED TO HAVE A
PRE-CONSTRUCTION MEETING WITH THE
URBAN FORESTRY STAFF PRIOR TO
COMMENCEMENT OF ANY LANDSCAPE
WORK OR SITE WORK AFFECTING
EXISTING TREES. CONTACT WADE
COLLUM AT 954-545-7766 or
wade.collum@copbfl.com



IRRIGATION PLAN

IRRIGATION NOTES & SPECIFICATIONS

- CONTRACTOR TO VISIT SITE AND REVIEW PLANS PRIOR TO SUBMITTING A PROPOSAL TO OWNER. CONTRACTOR SHALL VERIFY ALL SITE AND TREE INFORMATION, AND BRING ANY DISCREPANCIES, CONFLICTS OR OMISSIONS WITHIN THE PLANS TO THE ATTENTION OF THE LANDSCAPE ARCHITECT FOR CLARIFICATION PRIOR TO SUBMITTING A PROPOSAL. LANDSCAPE ARCHITECT WILL NOT BE HELD RESPONSIBLE FOR ANY CONFLICTS, OMISSIONS, OR DISCREPANCIES ONCE A BID OR PROPOSAL HAS BEEN SUBMITTED.
- THESE PLANS WERE PREPARED BASED ON THE BEST INFORMATION AVAILABLE AT THE TIME OF DESIGN.
- CONTRACTOR TO VERIFY ALL UNDERGROUND UTILITIES BEFORE WORK COMMENCES AND SHALL PROTECT ALL UNDERGROUND/ABOVE GROUND UTILITIES AND EXISTING CONDITIONS-TO-REMAIN DURING CONSTRUCTION.
- IRRIGATION SYSTEM SOURCE WILL BE A NEW 2" IRRIGATION METER. SEE CIVIL PLANS FOR EXACT LOCATION AND DETAILS INCLUDING BACKFLOW PREVENTION DEVICE DETAILS. IRRIGATION SYSTEM WILL HAVE AN EXTERIOR MOUNTED RAINBIRD (OR APPROVED EQUAL) PROGRAMMABLE CONTROLLER WITH AN INTEGRATED RAIN SENSOR SHUTOFF DEVICE IN AN UNOBSTRUCTED LOCATION.
- IRRIGATION CONTRACTOR TO COORDINATE WITH MEP ENGINEER AND GENERAL CONTRACTOR TO COORDINATE POWER NEEDS FOR CONTROLLER. PRIOR TO PROJECT CONSTRUCTION ACTIVITIES AND ALL SLEEVES BENEATH PAVEMENT. ALL IRRIGATION LINES AND ZONE VALVE WIRING BENEATH PAVEMENT SHALL BE WITHIN UNDERGROUND SCHEDULE 40 PVC SLEEVES AND SHALL BE A MINIMUM TWICE THE INSIDE DIAMETER OF LINES BEING SLEEVED. DEPTH FOR SLEEVES SHALL BE AS REQUIRED BY SOUTH FLORIDA WATER MANAGEMENT DISTRICT AND SHALL BE A MINIMUM OF 18" DEPTH. THIS MUST BE DONE BEFORE PROJECT CONSTRUCTION BEGINS SO PROPER INFRASTRUCTURE CAN BE IN PLACE WITHOUT INCURRING COSTS OF BORING BENEATH NEW ASPHALT PAVING.
- IRRIGATION CONTRACTOR SHALL PROVIDE SYSTEM COMPLETE AS SPECIFIED HEREIN, AND AS REQUIRED FOR PROPER PERFORMANCE AND COMPLIANCE; TO PROVIDE 100% (HEAD-TO-HEAD) IRRIGATION COVERAGE OF ALL PERVIOUS PLANTED AREAS WITHIN THE SITE. THE SCOPE OF WORK INTENDED WHEN BIDDING ON THESE IRRIGATION PLANS IS TO PROVIDE A COMPLETE, COMPLIANT, SAFE, FULLY-OPERATIONAL, INSTALLED IRRIGATION SYSTEM COMPLETE AND ACCORDING TO THE DESIGN HEREIN. THE IRRIGATION CONTRACTOR IS RESPONSIBLE FOR ALL COMPONENTS, APPROVALS, AND WORKMANSHIP TO MAKE THE SYSTEM FUNCTION PROPERLY AND IN ACCORDANCE WITH REGULATING CODES.
- CONTRACTOR WILL SECURE ALL NECESSARY PERMITS PRIOR TO SYSTEM INSTALLATION.
- ALL AUTOMATIC RAINBIRD ZONE VALVES SHALL BE INSTALLED IN A FIBERGLASS BOX AND SHALL BE ARRANGED FOR EASY ADJUSTMENT AND ACCESS. THE FLOW ADJUSTMENT FEATURE OF EACH VALVE SHALL BE UTILIZED TO BALANCE OPERATING PRESSURES THROUGHOUT THE SYSTEM. VALVE BOXES SHALL BE INSTALLED FLUSH WITH GRADE AND SHALL INSURE PERCOLATION THROUGH THE BOX.
- WATERING TIME PER STATION WILL BE DETERMINED IN THE FIELD AND PER LOCAL REQUIREMENTS OR RESTRICTIONS. REFER TO MANUFACTURER'S INSTRUCTIONS FOR PRECIPITATION RATES OF SPRINKLERS SPECIFIED AND SOUTH FLORIDA WATER MANAGEMENT DISTRICT REGULATIONS FOR WATERING, INCLUDING NEW LANDSCAPE INSTALLATIONS, INSTALLATIONS FROM 30-90 DAYS, AND REGULATIONS FOR ESTABLISHED LANDSCAPE PLANTING MATERIALS. AS PART OF THE SCOPE OF THIS WORK, CONTRACTOR SHALL BE RESPONSIBLE FOR PROGRAMMING WATERING TIMES FROM ESTABLISHMENT PHASE, INTERMEDIATE PHASE, AND FINAL SFWMD PHASE.
- IRRIGATION PLAN IS SCHEMATIC AND MAY SHOW COMPONENTS SLIGHTLY OFF FROM ACTUAL INTENDED LOCATIONS FOR GRAPHICAL CLARITY. IRRIGATION CONTRACTOR TO ADJUST TO FIELD CONDITIONS AND INACCURACIES THAT ARE INHERENT WITH DRAWINGS AT THIS DRAWING SCALE.
- IRRIGATION CONTRACTOR TO CONTACT LANDSCAPE ARCHITECT FOR ANY SUBSTANTIAL CHANGES THAT WOULD NOT CONFORM TO THE INTENT OF THE IRRIGATION PLANS. NO SUBSTITUTIONS IN MANUFACTURER MATERIALS WILL BE ACCEPTED UNLESS ACCEPTED IN WRITING BY THE LANDSCAPE ARCHITECT OF RECORD PRIOR TO ORDERING, PLANNING, OR INSTALLATION.
- ALL MAIN AND LATERAL PIPING RUNS TO HAVE CLEAN, SOLVENT WELD JOINTS WITH USE OF A COLORED PRIMER PRIOR TO APPLYING SOLVENT WELD.
- USE RAINBIRD ESP SERIES MODULAR HYBRID CONTROLLER EXPANDED TO A MIN. OF 12-STATIONS WITH EXPANSION MODULES INSTALLED OR APPROVED EQUAL IN OUTDOOR WALL MOUNTABLE STAINLESS STEEL SECURABLE ENCLOSURE. ATTACH HUNTER MINI-CLIK II RAIN SENSOR DEVICE TO CONTROLLER PER MANUFACTURER'S INSTRUCTIONS IN UNOBSTRUCTED LOCATION.
- PLAN WAS DESIGNED BASED ON ASSUMPTION OF AT LEAST 40 PSI FROM NEW IRRIGATION METER.
- MAINLINE, LATERAL LINES, ZONE VALVES AND OTHER COMPONENTS ARE SHOWN SCHEMATICALLY TO MAINTAIN GRAPHICAL CLARITY ON THIS PLAN. RUN ALL MAIN AND LATERAL (CIRCUIT) PIPING CLOSE TO PAVEMENT EDGES (SIDEWALKS, CURBS, ETC.) AS SHOWN. SYSTEM LAYOUT HAS TRIED TO MINIMIZE IMPACTS TO ROOT SYSTEMS OF EXISTING TREES TO REMAIN BUT TRENCHING WILL LIKELY ENCOUNTER SOME OF THESE. ANY ROOTS LARGER THAN 1.5" DIAMETER THAT ARE CUT DURING TRENCHING WILL BE ROOT PRUNED EVENLY WITH A CLEAN, SHARP TOOL, MADE SPECIFICALLY FOR TREE AND ROOT CUTTING/PRUNING. DO NOT LEAVE ANY JAGGED ROOTS OVER 1.5" IN DIAMETER AND FIELD ADJUST ALL UNDERGROUND LINE ROUTES TO AVOID TREES AND ROOT SYSTEMS.
- BUBBLER HEADS SHOWN GRAPHICALLY BUT NOT BUBBLER LATERAL LINES FOR GRAPHICAL CLARITY BUT INCLUDED IN ZONE CALCULATIONS; INCLUDE ONE BUBBLER NOZZLE FOR EACH NEW TREE ON SITE. SET FLOW TO NO MORE THAN 25 GPM.
- USE RAINBIRD 1800 SERIES SPRINKLER BODIES WITH NOZZLES AS SPECIFIED. SEE IRRIGATION DETAILS SHEET FOR SPRINKLER SCHEDULE AND DETAILS.
- RUN A MINIMUM OF ONE SPARE ZONE VALVE WIRE ALONG LATERAL LINE TO FURTHEST HEAD FROM CONTROLLER FOR FUTURE USE AS SPARE WIRE. TERMINATE IN NEAREST ZONE VALVE BOX WITH WIRE NUTS AND SILICON.
- ALL PIPING AND CONDUIT RUNS BENEATH PAVEMENT WILL BE PLACED IN PVC SLEEVES AT MIN. OF 24" BENEATH PAVEMENT OR AS PER SOUTH FLORIDA WATER MANAGEMENT DISTRICT REQUIREMENTS, WHICHEVER IS GREATER.
- AS PER 155.5203.B.5.A THRU E: CONTRACTOR SHALL PROVIDE A RUST FREE, AUTOMATIC UNDERGROUND IRRIGATION SYSTEM INSTALLED IN ACCORDANCE WITH REQUIREMENTS OF THE BUILDING CODE, INCLUDING A RAIN-SENSING CUTOFF DEVICE, PROVIDING 100% COVERAGE WITH 50% OVERLAP, AND REUSE WATER WHEREVER PRACTICABLE AND AVAILABLE.
- SEE SHEETS L-301 AND L-302 FOR ADDITIONAL IRRIGATION DETAILS, SPRINKLER HEAD SCHEDULE, AND SPECIFICATIONS.

PERMIT SET
MUST BE ON JOBSITE AT ALL
TIMES DURING CONSTRUCTION

NOTICE
INSPECTION REQUIRED
24 HRS. PRIOR TO COMMENCING ANY
WORK IN THE PUBLIC R/W CONTACT
THE BROWARD COUNTY HIGHWAY
CONSTRUCTION AND ENGINEERING
DIVISION AT 954-577-4689 FOR
INSPECTION.

NOTE:
APPROVAL OF THIS PLAN DOES
NOT CONSTITUTE A PERMIT FOR
CONSTRUCTION.
A PERMIT FOR CONSTRUCTION MUST
BE OBTAINED FROM THE BROWARD
COUNTY HIGHWAY CONSTRUCTION
AND ENGINEERING DIVISION PRIOR TO
COMMENCING CONSTRUCTION IN THE
PUBLIC RIGHT OF WAY.

ALL MATERIALS USED AND
INSTALLATIONS WITHIN THE PUBLIC
RIGHT OF WAY OR EASEMENTS SHALL BE
IN ACCORDANCE WITH BROWARD COUNTY
HIGHWAY CONSTRUCTION AND
ENGINEERING DIVISION SPECIFICATIONS.

BROWARD COUNTY HIGHWAY CONSTRUCTION
AND ENGINEERING DIVISION

PLAN CONSISTENT
WITH PLAT REQUIREMENTS
PUBLIC RIGHT OF WAY APPROVAL
FOR PAVING, GRADING AND DRAINAGE

BY: _____ DATE: _____
DOES NOT INCLUDE APPROVAL
OF PAVEMENT MARKING & SIGNS

BELOW IS AN AUTHORIZED DIGITAL SIGNATURE AND SEAL OF THE PROFESSIONAL LISTED BY
WAY OF THIS DOCUMENT. THE SIGNATURE AND SEAL ARE VALID FOR THE STATE OF FLORIDA
ELECTRONIC SEAL WERE PREPARED, SIGNED AND AUTHORIZED FOR SUBMITTAL BY ME ON THE
DATE OF SIGNED. WITH ALL AUTHORITY AND RIGHTS GRANTED TO ME BY THE STATE OF
FLORIDA SS 481.301 PART II AND ASSOCIATED REFERENCES THEREIN.

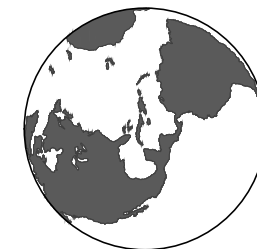
B.C.H.C.E.D REF. NO. 200617002

PZ22-12000027
12/03/2025



BY	DATE	REVISIONS
WB	10-29-25	REVISIONS PER ADJACENT LANDSCAPE AND SITE PLAN COORDINATION AND REVIEW COMMENTS
WB	08-21-25	REVISIONS PER ADJACENT LANDSCAPE AND SITE PLAN COORDINATION AND REVIEW COMMENTS

GREEN EARTH
LANDSCAPE ARCHITECTURE
HOLLYWOOD, FLORIDA
E-mail: info.bryan@greeneearth.com PHONE: 954-638-1825



PROJECT #	25-111
DATE	05-28-2025
SCALE	AS SHOWN
DESIGNED BY	WB
DRAWN BY	WB
CHECKED BY	WB



RACETRAC PETROLEUM, INC.
SAMPLE ROAD & 27TH AVENUE
POMPANO BEACH, BROWARD COUNTY
FLORIDA 33069

IRRIGATION
PLAN

SHEET NUMBER

L-300